




THE PORTO

-  4 Bedrooms
-  2 Bathrooms
-  2 Car Bay

Minimum Block Width: 12.5m

Ground Floor Area: 112.0m²

Upper Floor Area: 101.1m²

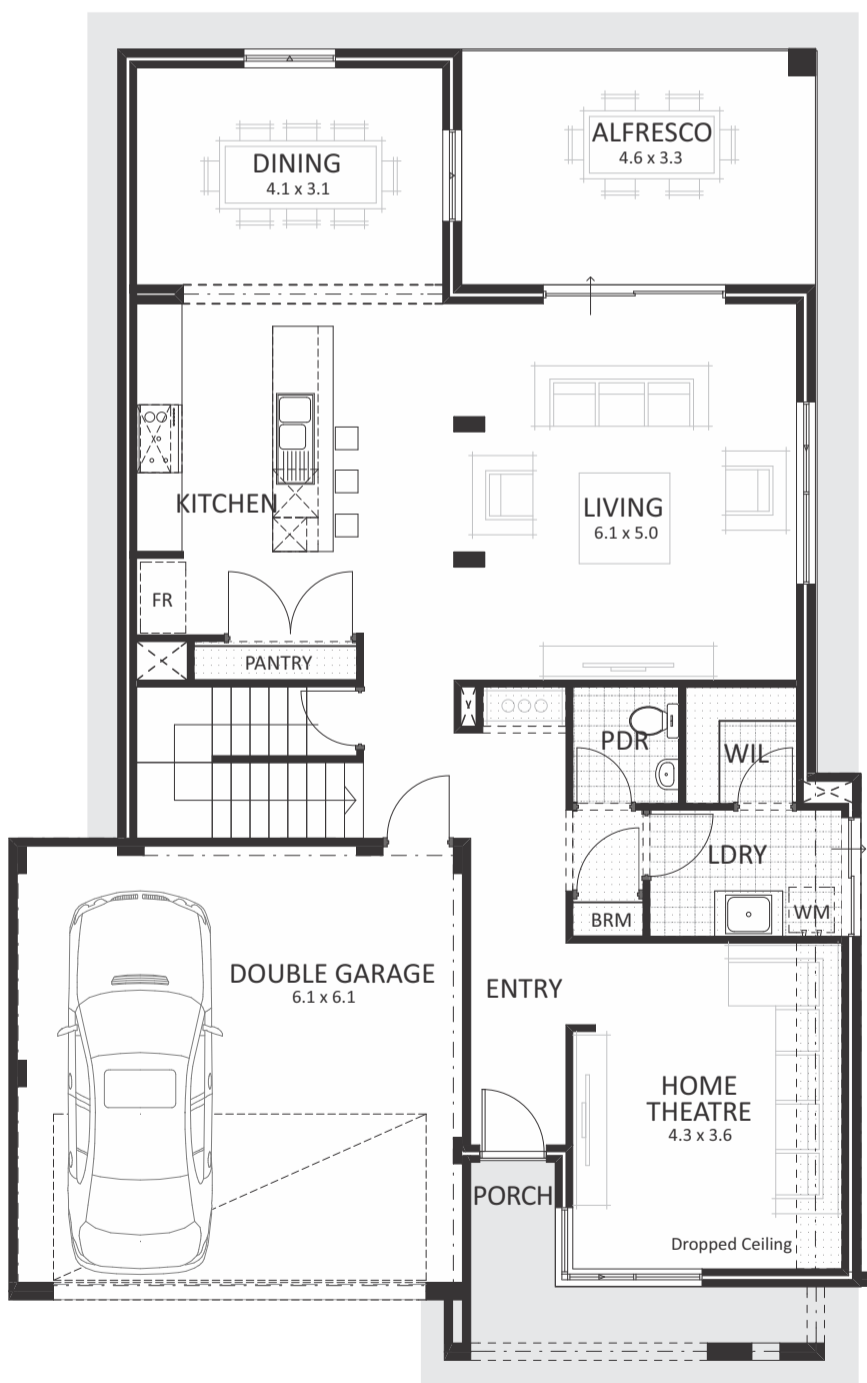
Garage Area: 36.3m²

Porch Area: 6.7m²

Alfresco Area: 14.5m²

Total Area: 270.8m²

LOWER
FLOOR



UPPER
FLOOR

